



# SEP IN BRAZIL

FEDERAÇÃO BRASILEIRA DE ACADÊMICOS DE FARMÁCIA (FEBRAF)

# FEBRAF & IPSF

IPSF (International Pharmaceutical Students' Federation) was founded in 1949 by eight student associations in London and currently has approximately 350,000 associate undergraduate and postgraduate pharmacy students spread across 90 countries on all continents.

FEBRAF is a non-political, non-profit and non-religious association created in 2019 February to represent all Brazilian Pharmacy Students who have an interest in the scientific contribution of the area in the country even after graduating.

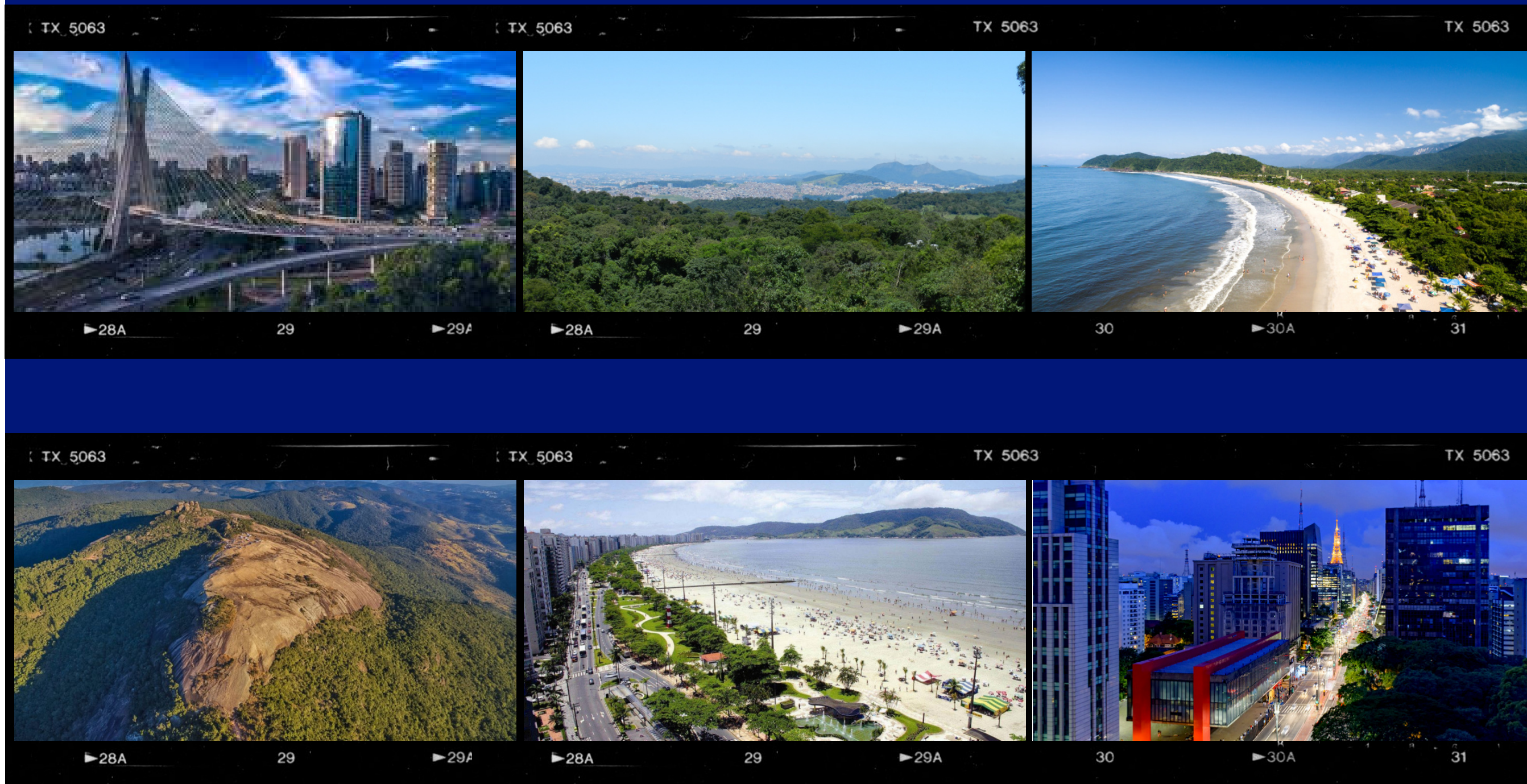


# FEBRAF

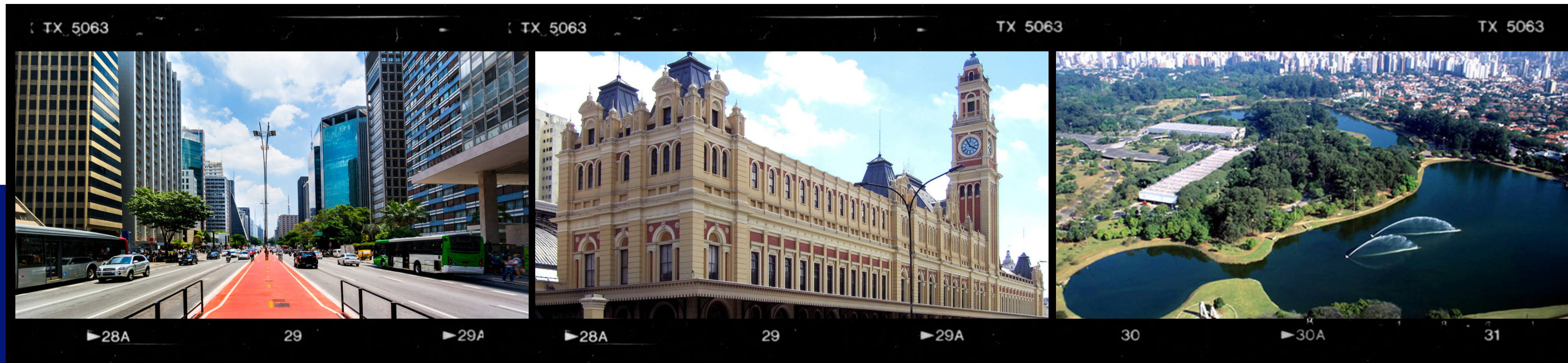
SEP is the IPSF Student Exchange Program, whereby every student who is IPSF-affiliated and up-to-date with their obligations has the opportunity to conduct academic exchanges in various areas of pharmacy for 2 weeks to 2 months.

# WHY CHOOSE BRAZIL?

CITIES, FORESTS, CAMPS, BEACHES, MOUNTAINS  
BRAZIL IS FOR ALL TASTES



# SÃO PAULO



As FEBRAF is a very new association, the only city available to carry out the SEP is São Paulo, one of the largest cities and the most important economic center in Brazil. It is the capital of culture in Latin America, with a unique offer of leisure, knowledge and entertainment.



# KNOWN AS THE CITY THAT DOESN'T STOP

314 movie theaters

138 theaters

150 libraries

53 shopping malls

158 museums

109 parks

314 movie theaters

20 thousand restaurants

38A

39

39A

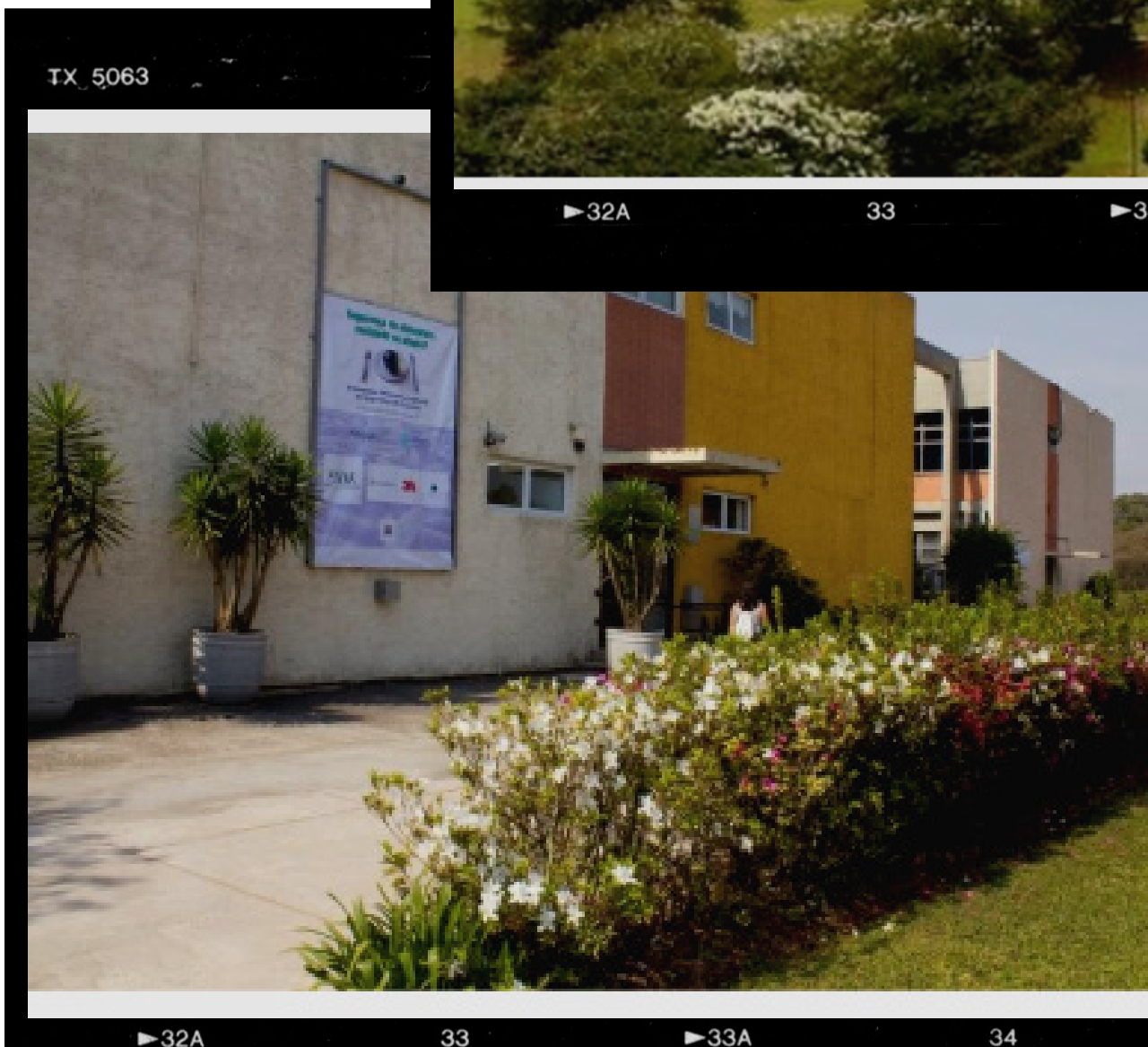
40

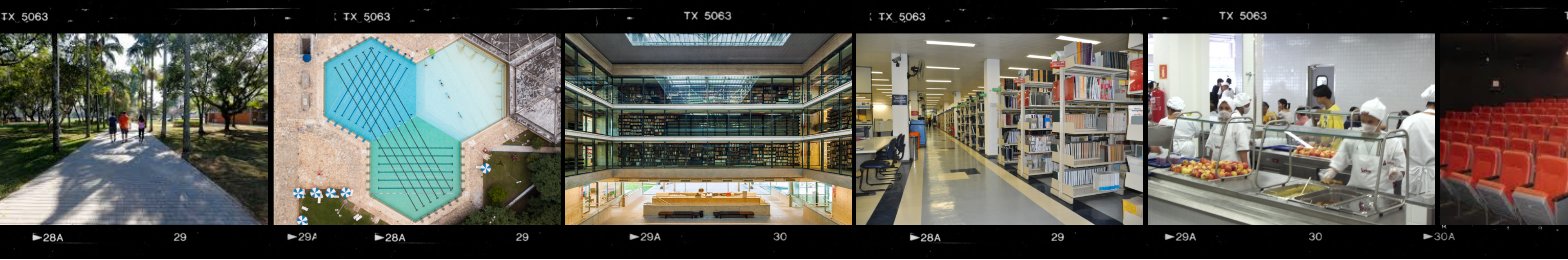
TX 5063



# FACULDADE DE CIÊNCIAS FARMACÊUTICAS DA UNIVERSIDADE DE SÃO PAULO

*The University of São Paulo's Pharmaceutical Sciences School was founded in 1898 and it pioneered the research and formation of professionals related to the pharmaceutical industry. FCF has four Departments - Food and Experimental Nutrition; Clinical and Toxicological Analyzes; Pharmacy; and Biochemical-Pharmaceutical Technology.*





# WHAT IT IS LIKE TO STUDY AT FCF USP?

FCF IS PLACED IN THE USP CAMPUS "CIDADE UNIVERSITÁRIA", NEXT THE SUBWAY STATION "BUTANTÃ". HOWEVER, EVEN BEING VERY CLOSE TO THE CENTER OF SÃO PAULO, THE CAMPUS ALREADY HAS SEVERAL ATTRACTIONS FOR ITSELF AND SO IT IS CALLED "UNIVERSITY CITY".





# CEPEUSP

The "Centro de Práticas Esportivas" (CEPE) is a multisport complex, which offers a variety of activities such as Fitness, Capoeira, Swimming, Soccer, Volleyball, Basket, Baseball, Athletics, Judo, Karate, etc.

It has a gym, sports courts, pools, athletics track, soccer fields and rooms for other physical activities.

All exchange students can have access to CEPE and also take part on the activities.



▶28A

TX 5063



29

▶29A

TX 5063



30



▶29A

TX 5063



30

▶30A



31

TX 5063



# LIBRARIES

USP has 70 libraries installed in various units of education, museums and research institutes on various campus. These libraries make up USP's Integrated System of Libraries (SIBi)

Next to FCF, we have the **Division of Library and Documentation of the Chemistry Ensemble** consisted by 108.535 registred volumes, including books, thesis and reviews, and offering users 7 group study rooms, 25 computers for catalogs research and Internet databases, a multimedia room with video conferencing capabilities, and also a gourmet space, providing users a pleasant atmosphere for meetings, lectures, classes, courses and other events.

It is open to the public during class periods from Monday to Friday, from 8:00 a.m. to 10 p.m. and on Saturdays from 9 a.m. to 1 p.m



TX 5063

28A



29

29A



TX 5063

30



29A

TX 5063



30

30A



31

TX 5063

# RESTAURANTS

The Campus "Cidade Universitária" has 4 (four) restaurants, which produces and distributes meals at reasonable prices (0,48USD for lunch and dinner and 0,12USD for breakfast). USP students call these restaurants by "Bandejão".

Your RUCARD (USP Restaurant's Credit Card) can be charged from Monday to Sunday between 8:00 am to 18:45 pm at the address: Rua do Anfiteatro. n° 295 or by the app "Cardápio USP".

FCF's students usually goes to the Chemistry Restaurant, cause its really close. It opens 11:30 am to 14:00 pm for lunch and 17:30 to 19:45 pm for dinner.



TX 5063

▶28A



29

▶29A



TX 5063

30



▶29A

TX 5063



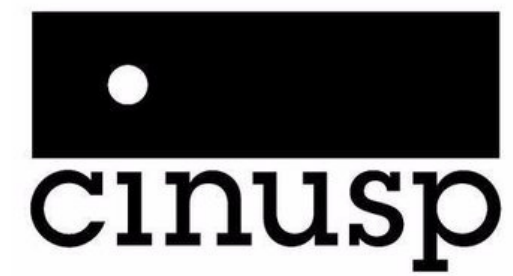
30

▶30A



31

TX 5063



# CINUSP

Inside USP you will also find Cinusp (USP's Cinema) "Paulo Emílio", a movie theater that offers free movie sessions from Mondays to Fridays, often followed by debates and seminars with professors and deans.

Each month cinusp shows films with a different theme covering all tastes: animations, horror, comedy, drama, romance, sci-fi, cult, thriller, old and newly released movies of all nationalities.

In another build outside the campus there is another movie theater called "Maria Antônia". In this same place, has art exhibitions and also the USP Theatre.



TX 5063

28A



29



TX 5063

29A



TX 5063

30



TX 5063

29A



30

30A



TX 5063

31

# MUSEUMS

In addition to cinemas and theater, USP houses centers and museums of art, culture and science that are important not only to the university community, but to society as a whole. These are spaces open to the general public that house artistic, historical and scientific activities. On campus "Cidade Universitária" we have: Museum of Human Anatomy, Museum of Veterinary Anatomy, Museum of Archeology and Ethnology, Museum of Contemporary Art, Museum of Geosciences, Oceanographic Museum, Museum of Crime and Museum of Education and Toy.

In the city of São Paulo we still have the Science and Technology Park (Cientec), the Paulista Museum, the Zoology Museum, another Museum of Contemporary Art, the Dona Yayá House Cultural Preservation Center. And in other cities/campus: the Center for Scientific and Cultural Dissemination (in the city of São Carlos), the Engenho São Jorge dos Erasmos Ruins (in the city of Santos), the Republican Museum (in the city of Itu) and the Luiz de Queiroz Museum (in the city of Piracicaba).



TX 5063

▶ 28A



29

▶ 29A



TX 5063

30



▶ 29A

TX 5063



30

▶ 30A



31

TX 5063

# ABOUT OUR PROGRAMS:

## FEBRAF HAS 2 SEP PROGRAMS

OFFER AT USP, BOTH IN SCIENTIFIC RESEARCH AND WITH NO DEADLINE TO APPLY, SO, IF YOU ARE INTERESTED, ASK YOUR HOME SEO TO SEND US A MAIL AND SEE THE AVAILABILITY.

### 1. QUALITY CONTROL OF DRUGS, COSMETICS AND HERBAL MEDICINES

The student will develop skills in relation to analytical methods, pharmacopoeial tests and current legislation aimed at and applied to the physical-chemical quality control of inputs, medicines and cosmetics for professional practice in the area of physical-chemical quality control in the pharmaceutical industries, research and laboratories.



### 2. MICROBIAL BIOMOLECULES

The student will work with Biotechnological production of Antimicrobial Compounds (Bacteriocins and Biosurfactants) with application in the pharmaceutical, food, veterinary and dental areas.

## RESEARCH LINE 1

- 2 to 8 weeks;
- Any time of the year;
- Undergraduated from 2nd year;
- Fluent English, Portuguese or Spanish.

## RESEARCH LINE 2

- 8 weeks;
- Preference for November and December;
- Only graduated (up to 4 years after their first degree) students with prior experience;
- Minimum advanced English or Portuguese.

# DURING THE SEP

- Acomodation: guest house or hostel;
- Free transport from Butantã Subway Station to USP;
- Welcome and farewell party;
- Tour at USP (museums, sport club, cinusp, libraries, etc);
- São Paulo City Tours;
- Gourmet Tours;
- International Food Night;
- Special Weekend (beach/camp trip);
- And...



# DURING THE SEP

- ...PARTIES!!





# HOW TO APPLY SEP IN BRAZIL



- First of all, ask your home SEO to check if there is availability;
- After passing through your association's pre-selection process, fill in your application form and submit;
- As soon as your exchange is confirmed, we will send you all the information and details you need to know about the visa, accommodation, documents, about Brazil, São Paulo, USP and about the Scientific Research before coming;
- Our team will provide you a custom SEP Schedule matching the lab routine with every social event you want to do;
- Last but not least, buy your ticket, pack your bags and come enjoy the SEP in Brazil!!

# SEP IN BRAZIL



Anaís Marques (Naná)



seo.febraf@gmail.com



+5511993401935

FEDERAÇÃO BRASILEIRA DE ACADÊMICOS DE FARMÁCIA (FEBRAF)